

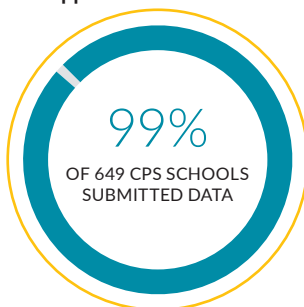
STATE OF THE ARTS IN CHICAGO PUBLIC SCHOOLS 2023-24



ingenuity

Over the past five years, arts education in Chicago Public Schools (CPS) has been tested by profound challenges, including the disruptions of the COVID-19 pandemic and the ongoing effort to address systemic inequities. Through it all, the Creative Schools Certification (CSC) has remained an anchor — a critical tool for shared measurement, tracking access to and quality of arts education in CPS. **This 12th annual State of the Arts (SOTA) Report reflects both remarkable progress and the opportunities that remain.**

This is the highest percentage of schools submitting data for the CSC since 2012-13.



100%
DISTRICT-MANAGED*
SCHOOLS SUBMITTED DATA

* School governance indicates whether a school is District-Managed or Non-District Managed. Non-District Managed schools include charter school campuses, contract schools, Alternative Learning Opportunities Programs (ALOP) and SAFE schools.

2023-24 SOTA THEMES

1

Several key metrics on the Creative Schools Certification have shown **significant progress and growth**, reaching their highest levels since the onset of the COVID-19 pandemic in 2019-20.

2

There is a **strong call to advocacy to all stakeholders across the arts education sector** in Chicago to ensure all students have equitable access to a high-quality arts education.

3

Around **400 arts organizations** have partnered with CPS schools each year since 2021-22, though there have been **underlying shifts in program delivery and reach**.

4

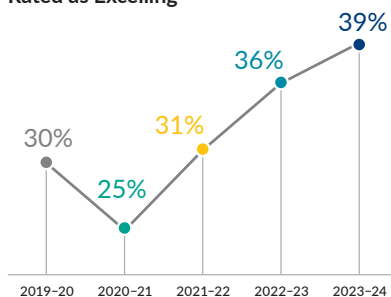
Persistent gaps seen since 2019-20 in access to and quality of arts education **highlight opportunities to develop evolved strategies** in the new CPS Arts Education Plan.

OVERALL RATINGS ON THE CREATIVE SCHOOLS CERTIFICATION



Excelling schools are those that met the goals and priorities outlined in the 2012 CPS Arts Education Plan.

Percentage of All CPS Schools
Rated as Excelling



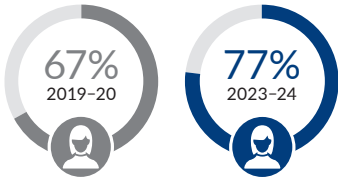
READ
THE FULL
REPORT:



The highest percentage of schools were rated as Excelling on the following metrics in 2023–24 since 2019–20.

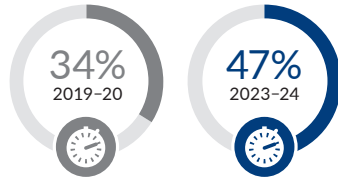
STAFFING

To be rated as Excelling on Staffing, schools must have 350 or fewer students per arts instructor.



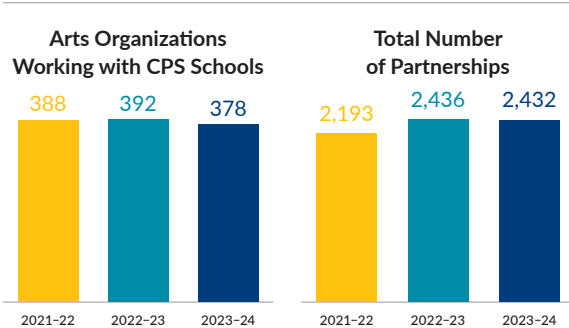
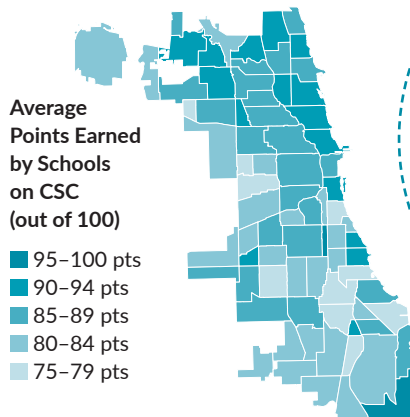
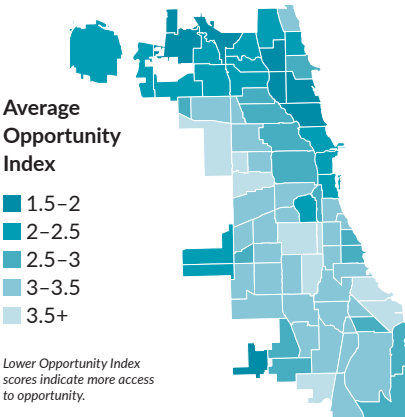
MINUTES OF INSTRUCTION

To be rated as Excelling on Minutes of Instruction, schools must provide 120 or more weekly average minutes of arts instruction.



A new *Advocating for Equity in Arts Education* section explores the following question: Who has access to arts education?

A clear correlation emerged: Schools with greater access to opportunity, as measured by the CPS Opportunity Index, were more likely to achieve higher CSC ratings. Additionally, there were inequities in access when CSC data was examined through the lenses of Chicago's community areas, school governance structures, and student racial and ethnic demographics.



Persistent gaps seen over the past five years highlight opportunities to develop evolved strategies for the following metrics: Disciplines & Depth, Minutes of Instruction, and Arts Learning Standards.

Read the State of the Arts (SOTA) Report and explore other data tools such as the SOTA Dashboard and SOTA Toolkit at ingenuity-inc.org.